



Company profile DO Engineering *(Version 29-11-2019)*

Introduction

DO Engineering is an engineering company, founded by 2 brothers, that occupies itself with technical service with a wide service package. Our services include, among other things : 2D and 3D CAD, designing, modeling, constructing, technical drawing, technical advice and FEM / FAE calculation / simulation of technical constructions, secondment, as well as the possibility for the build of prototypes and carrying out or accompanying testing / measurements. With this package we are able to support you at different stages of technical projects or take on and work out projects entirely.

DO Engineering has a highly educated team (higher vocational education) with an experience of many years in the technical field. On top of this DO Engineering is flexible and customer oriented, in our opinion there should be a combination of your specialties and qualities combined with those of DO Engineering in every assignment in order to come to a good design- / product result.

In most cases DO Engineering works on client specification, but also develops products under own management.

Company

About us

DO Engineering is an engineering company founded by Marcel and Léon den Ouden, 2 brothers with similar technical background. Both have completed their education at the HTS Autotechniek (Institute of Automotive Engineering) with main subjects Technical Vehicle Design and Development, and Technical Traffic Accident Analysis. During and after their education they have been employed at among others : TNO, Donkervoort Automobielen and WP Suspension. During their employment, they have gained a wide general experience in several positions and on several technical areas (among other automotive and mechanical), with emphasis on Technical Vehicle Engineering and Development.

Approach

After the first contact it's important to get a good view of what you need as a customer, and what we can mean for you in this. It is also important to get a clear view of the workscope. Depending on the nature and magnitude of the assignment we will determine if a visit is necessary or if the information exchange through e-mail could be sufficient. Depending on this, the contact in the beginning can be fairly intensive, before we can report you a price indication and we can draw up a plan together with you and report to you with a quotation. This is important in order to ultimately come to a good result and avoid that you are confronted with incremental costs and project delays because of a lack of clarity.

Services

Designing

A concept design is frequently made by means of a sketch. By means of the concept design it is important to transfer this into a digital 2D or 3D CAD model. This way the possibilities, possible problems and restrictions become visible more rapidly and moreover makes communication concerning the design with you, the customer, much more effective.

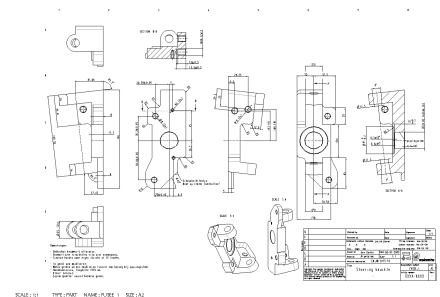


Constructing

Constructing is really the succession of a design, in this phase work is being performed on the manufacturability of the design / model and, for instance, (temporarily) choices are made for materials, parts to be used, production techniques and components to be used.

Technical drawing

DO Engineering can make production drawings for you from a 2D or 3D CAD design made by us. Also, we can, for example, digitalize your existing drawings (possibility for including 3D models), adapt existing drawings, or make technical drawings of existing products (reverse engineering).

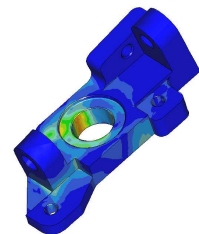


Technical advice

We, as engineering company, can provide you with expert advice on several technical problems. Also, we can serve as “sparring-partner” to review your products / ideas on feasibility and supply you with improvement propositions.

Calculation / simulation constructions

DO Engineering can calculate / simulate (FEM / FEA) constructions for you on, among other things, application, strength and thermally to reach an optimum design, (material choice, weight, strength, price) and more certainty with application of products.



Building prototypes

We can offer you the possibility of looking after or of accompanying construction of prototypes. This could be exclusive or inclusive of the ordering of all necessary components.

Testing / measurements

The test phase of a product is very important because this is when the validation of the requirements to a product are reviewed. At this stage theory and practice come together and, provided that there is a good approach, important matters can become noticeable. The test phase is necessarily, depending on the application, because calculations frequently only can be performed with ideal circumstances (uniform material properties etc.), and seldom with all possible loads simultaneously.

Also, information about the use of products can be obtained by means of tests, when performing measurements during these tests. With these measurements, loads can be determined, that are necessary in order to calculate and / or optimize products.

Because of plenty of experience with testing products, DO Engineering can accompany and advise you with the setting up of a test program and, because of this, obtain a high degree of certainty concerning functionality and durability of products.

Secondment

When you have a temporary lack of engineering capacity it is possible, in mutual consultation, to hire DO Engineering to support your company. Contact DO Engineering for the possibilities for secondment.

Products

Besides the offering of services, DO Engineering also develops products under own management, these products are also sold by DO Engineering.

Oil filling machine

DO Engineering has developed 2 different oil filling machines (XP and LT) that use cycles of high vacuum and pressure, that allow you to fill a shock absorber (damper) and other suspension related products quickly, without spilling oil, and most important; without large amounts of air trapped inside the shock absorber! DO Engineering develops and builds these products in house and sells the oil filling machines worldwide. Learn more about the capabilities of the DO Engineering oil filling machines and the usage of the machines, for filling your shock absorbers or dampers, in the brochure.





Contact

Contact us, free of obligations, to discuss what we could do for you.

DO Engineering

Heideblauwtje 9
7826 GE Emmen
The Netherlands

+31 (0)24 848 72 71

info@do-engineering.nl